

vtech[®]

User's Manual

3-in-1 Care & Learn Stroller™



© 2014 VTech
Printed in China
91-002933-000 US

Dear Parent,

At VTech®, we know how important the first day of school is for your child. To help prepare preschoolers for this important event, VTech® has developed the **Preschool Learning™** series of interactive toys.

Preschool Learning™ features fun characters and inviting school themes that use technology to capture a child's attention and teach important preschool skills like spelling, counting and the alphabet. These vital skills are taught in a way that's both fun and highly engaging to maintain a child's interest. Children will also be introduced to fun school subjects such as art class, music class and even recess! With **Preschool Learning™**, learning is fun from day one!

At VTech®, we know that a child has the ability to do great things. That's why all of our electronic learning products are uniquely designed to develop a child's mind and allow them to learn to the best of their ability. We thank you for trusting VTech® with the important job of helping your child learn and grow!

Sincerely,

Your friends at VTech®

To learn more about **Preschool Learning™** series and other VTech® toys, visit www.vtechkids.com

INTRODUCTION

Thank you for purchasing the **VTech® 3-in-1 Care & Learn Stroller™!**

This interactive stroller has three modes and easily transforms from a stroller to high chair to bassinet. Your child can also listen to fun rhyming stories, explore nutrition and hear baby care reminders for more role-play fun!

TRANSFORMATION BUTTON



BABY DOLL

ROLLERS

BOWL

FOOD AND
NUTRITION
BOOK PAGE

ON/OFF/
VOLUME
SWITCH

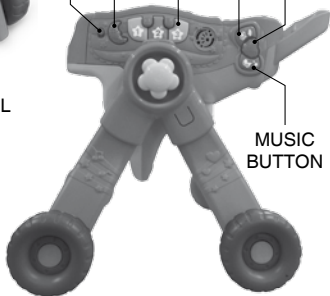
NUMBER
PIANO KEYS

HEART
LIGHT

MOON
LIGHT

STORY
BUTTON

MUSIC
BUTTON



INCLUDED IN THIS PACKAGE

- One VTech® 3-in-1 Care & Learn Stroller™
- One baby doll
- One user's manual

WARNING: All packing materials, such as tape, plastic sheets, packaging locks and tags are not part of this toy, and should be discarded for your child's safety.

ATTENTION: Pour la sécurité de votre enfant, débarrassez-vous de tous les produits d'emballage tels que rubans adhésifs, feuilles de plastique, attaches et étiquettes. Ils ne font pas partie du jouet.

NOTE: Please keep user's manual as it contains important information.

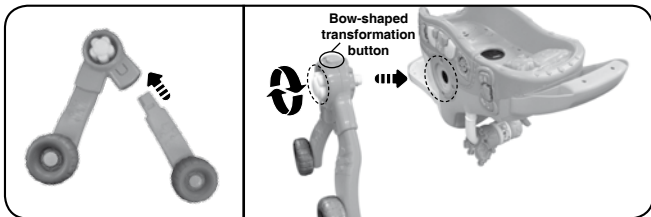
GETTING STARTED

PRODUCT ASSEMBLY

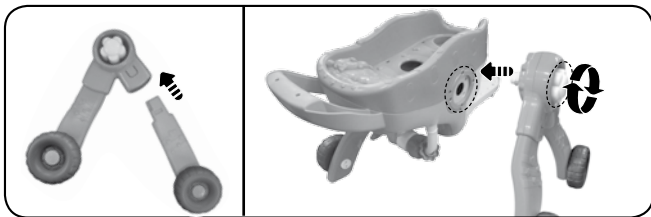
To ensure your child's safety, this product should only be assembled by an adult.

HOW TO ASSEMBLE THE STROLLER

- 1) Select a leg with wheel and insert it into the piece with the flower knob and bow-shaped transformation button. Using the flower as a guide, attach the legs to the side of the bassinet with the piano keys. Be sure to match the pegs on the legs to the holes in the side of the bassinet. Rotate the flower knob to the right to secure legs tightly to the stroller.

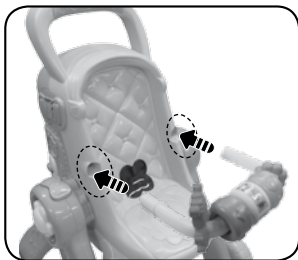


- 2) Insert the remaining leg into the other piece with the flower knob. Using the flower as a guide, attach the legs to the other side of the bassinet making sure to match the pegs on the legs to the holes in the side of the bassinet. Rotate the flower knob to the right to secure the legs tightly to the stroller.



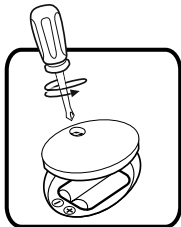
HOW TO INSTALL THE ROLLER HANDLE TO THE STROLLER

Push the ends of the roller handle into the stroller until it is snug.



BATTERY INSTALLATION

1. Make sure the unit is turned OFF.
2. Locate the battery cover on the back of the unit. Install 2 new “AA” size (LR6/AM-3) batteries following the diagram inside the battery box.
3. Replace the battery cover.



BATTERY NOTICE

- Use new alkaline batteries for maximum performance.
- Use only batteries of the same or equivalent type as recommended.
- Do not mix different types of batteries: alkaline, standard (carbon-zinc) or rechargeable (Ni-Cd, Ni-MH), or new and used batteries.
- Do not use damaged batteries.
- Insert batteries with the correct polarity.
- Do not short-circuit the battery terminals.
- Remove exhausted batteries from the toy.
- Remove batteries during long periods of non-use.
- Do not dispose of batteries in fire.
- Do not charge non-rechargeable batteries.
- Remove rechargeable batteries from the toy before charging (if removable).
- Rechargeable batteries are only to be charged under adult supervision.

PRODUCT FEATURES

1. ON/OFF/VOLUME SWITCH

Slide the **ON/OFF/VOLUME SWITCH** from **Off** to the **Volume** position to turn the unit on and adjust volume. Slide the **ON/OFF/VOLUME SWITCH** from **Volume** to **Off** to turn the unit off.



2. SMART SENSOR

Stroller recognizes when it's being moved and plays melodies and fun sounds. It also recognizes when the baby doll is in the stroller, high chair and bassinet.



3. MUSIC BUTTON

Press the **Music Button** to hear melodies or familiar lullabies.



4. STORY BUTTON

Press the **Story Button** to hear sounds, facts and classic nursery rhymes.



5. NUMBER PIANO KEYS

Press the **Piano Keys** to learn numbers and counting, hear sing-along songs or play piano in music mode.



6. FOOD AND NUTRITION BOOK PAGE

Turn the **Book Page** to learn about healthy habits, food and nutrition.



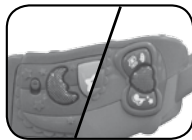
7. BOWL

Spin the food in the **Bowl** during feeding time for the baby doll.



8. HEART AND MOON LIGHTS

The **Heart and Moon Lights** will flash in time to the music.



9. BABY DOLL

A **Baby Doll** is included to encourage role play and nurturing.

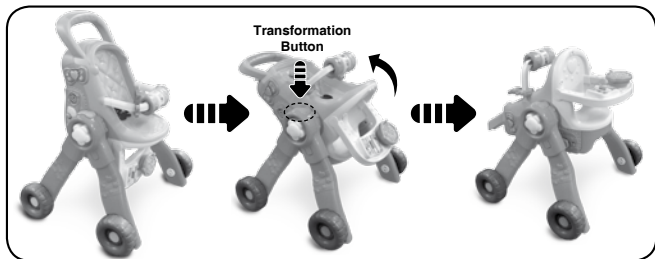
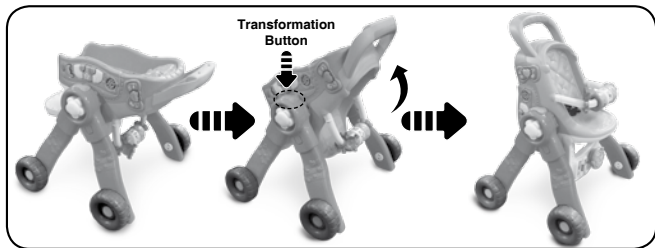
The stroller fits most dolls up to 14 inches.



10. TRANSFORMATION BUTTON

To easily transform from a bassinet to stroller to high chair, hold the **Transformation Button** and rotate the stroller body by pulling the handle. When the correct position is reached, you will hear an affirming sound effect.

To transform back from a high chair to stroller to bassinet, hold the **Transformation Button** and rotate the stroller body in the opposite direction by pulling the handle.



Note: The unit cannot be turned 360 degrees.

ACTIVITIES

Activity 1: Stroller Mode

Take the baby doll for a walk to pretend places like the farm, park and neighborhood. When you push the stroller, you will hear environmental sounds from that particular location. For example, hear a cow on the farm. Press the **Music and Story Buttons** to hear interesting phrases and melodies that relate to the three locations.

Press the **Number Piano Keys** to hear 6 songs.
Sing-along to the classic ABC song and original tunes about colors and places:

SONG LYRICS

Let's sing a song
As we stroll along,
About the rainbow colors:
They are red, orange, yellow and blue,
Indigo and violet, too!

Primary colors are red, yellow and blue.
There are lots of other colors, it's true.
Orange, purple and green, to name a few!

Let's walk to the park,
Where we'll run and swing.
Monkey bars and balance beams,
Race you down the slides.

Farm, farm animals
Make lots of sounds and squawks.
Cows, they moo, and chickens, they bawk,
And the farmers, they whistle all day.

Today is a great day for a stroll.
Pushing the stroller, we're on a roll.
The sun shines bright, the air is sweet.
Listen to the sounds and the birdies tweet.



Activity 2: High Chair Mode

Enjoy spinning the food in the **Bowl** during the baby doll's mealtime. Turn the **Book Page** to learn about different foods and nutrition. Healthy habits remind you how to take good care of the baby doll.



Activity 3: Bassinet Mode

Press the **Music Button** to soothe the baby to sleep with 20 familiar lullabies. Press the **Story Button** to hear classic nursery rhymes. The **Number Piano Keys** introduce numbers and counting, and also allow you to play each lullaby note-by-note.



CARE & MAINTENANCE

1. Keep the unit clean by wiping it with a slightly damp cloth.
2. Keep the unit out of direct sunlight and away from any direct heat source.
3. Remove the batteries when the unit is not in use for an extended period of time.
4. Do not drop the unit on hard surfaces and do not expose the unit to moisture or water.
5. Use this toy indoors for best results.

TROUBLESHOOTING

If for some reason the program/activity stops working or malfunctions, please follow these steps:

1. Turn the unit **OFF**.
2. Interrupt the power supply by removing the batteries.
3. Let the unit stand for a few minutes, then replace the batteries.
4. Turn the unit **ON**. The unit should now be ready to play again.
5. If the product still does not work, replace with a new set of batteries.

If the problem persists, please call our Consumer Services Department at 1-800-521-2010 in the U.S., or 1-877-352-8697 in Canada, and a service representative will be happy to help you.

IMPORTANT NOTE:

Creating and developing **VTech**[®] products is accompanied by a responsibility that we at **VTech**[®] take very seriously. We make every effort to ensure the accuracy of the information which forms the value of our products. However, errors sometimes can occur. It is important for you to know that we stand behind our products and encourage you to call our Consumer Services Department at 1-800-521-2010 in the U.S., or 1-877-352-8697 in Canada with any problems and/or suggestions that you might have. A service representative will be happy to help you.

Note:

This equipment has been tested and found to comply with the limits for a Class B digital device, pursuant to Part 15 of the FCC Rules. These limits are designed to provide reasonable protection against harmful interference in a residential installation. This equipment generates, uses and can radiate radio frequency energy and, if not installed and used in accordance with the instructions, may cause harmful interference to radio communications. However, there is no guarantee that interference will not occur in a particular installation. If this equipment does cause harmful interference to radio or television reception, which can be determined by turning the equipment off and on, the user is encouraged to try to correct the interference by one or more of the following measures:

- Reorient or relocate the receiving antenna.
- Increase the separation between the equipment and receiver.
- Connect the equipment into an outlet on a circuit different from that to which the receiver is connected.
- Consult the dealer or an experienced radio/TV technician for help.

Caution: Changes or modifications not expressly approved by the party responsible for compliance could void the user's authority to operate the equipment.

